

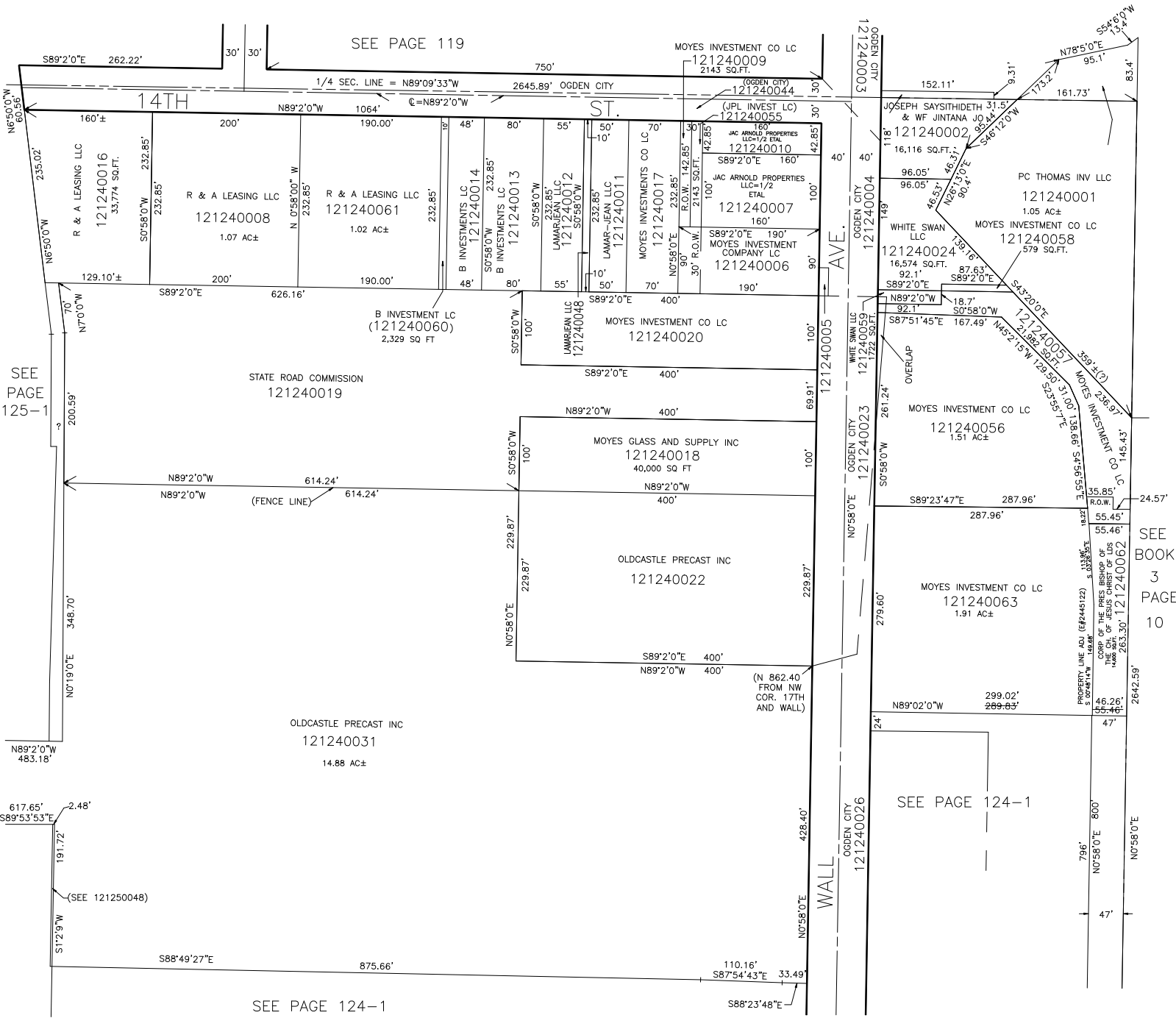
PART OF S.W. 1/4  
SECTION 20, T.6N., R.1W., S.L.B. & M.

IN OGDEN CITY  
SCALE 1" = 100'

TAXING UNIT: 25

ALSO SEE P. 124-1

SEE PAGE 119



SEE PAGE 125-1

SEE BOOK 3 PAGE 10

SEE PAGE 124-1

SEE PAGE 124-1